

Six Main Types of Daylilies



Recurved: Both petal and sepal curve back toward the scape.



Triangular: Only the sepals curve back toward the scape.



Pinched: The end of the petals and sepals look as though they have been pinched.



Flat: Both petals and sepals do not curl or curve under.



Spider: Long skinny petals and sepals that may be twisted.



Double: The reproductive parts become an extra set of petals.



Planting a Daylily

Step One

Dig a Hole that is the diameter of the roots spread out horizontal, and about three inches deep.

Step Two

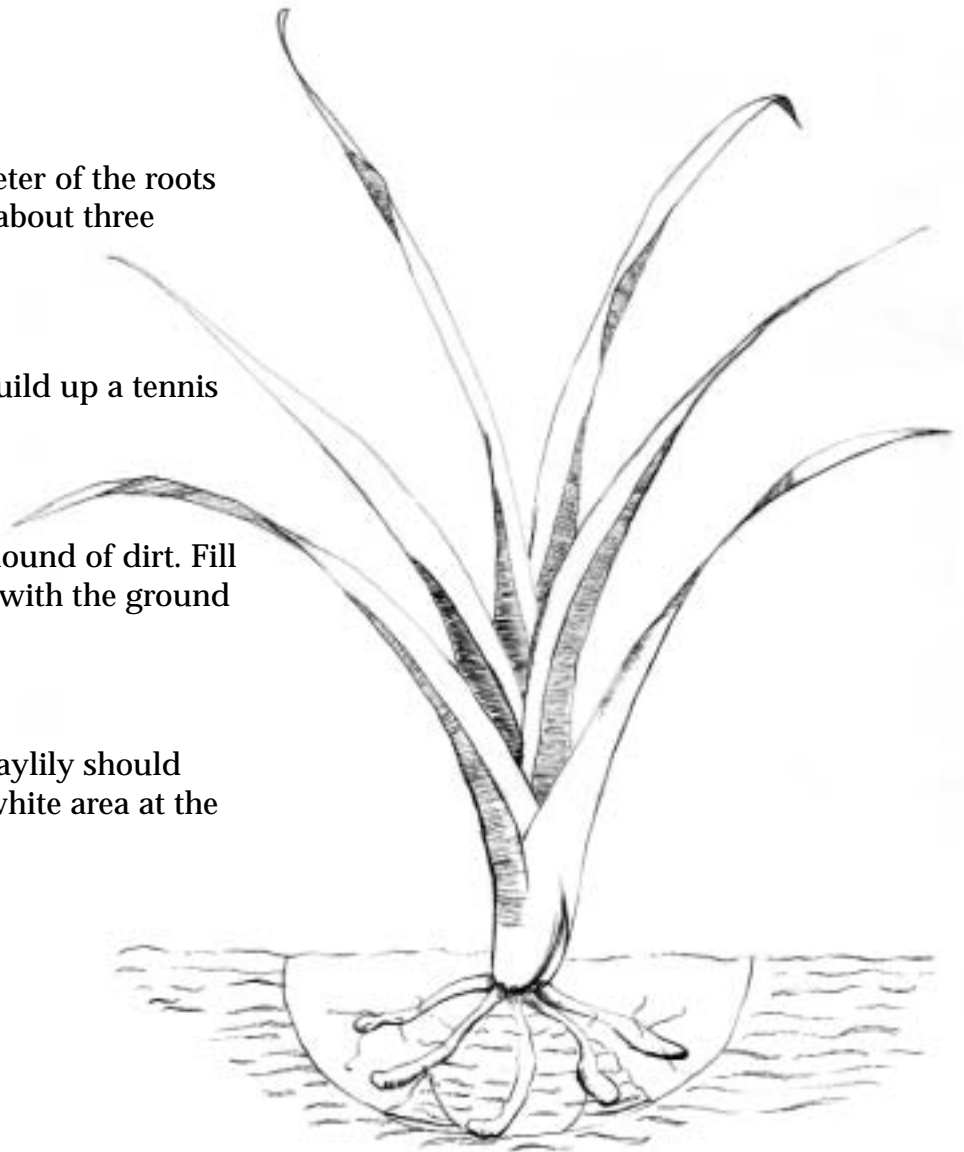
In the middle of the hole, build up a tennis ball sized amount of dirt.

Step Three

Spread the roots over the mound of dirt. Fill in the dirt so that it is level with the ground near the hole.

Step Four

The dirt surrounding the Daylily should come to the middle of the white area at the base.



*Be careful; do not plant the Daylily too deep! The dirt should come to the middle of the white area at the base, which is usually 1 1/4" to 1 1/2" above the base of the Daylily.

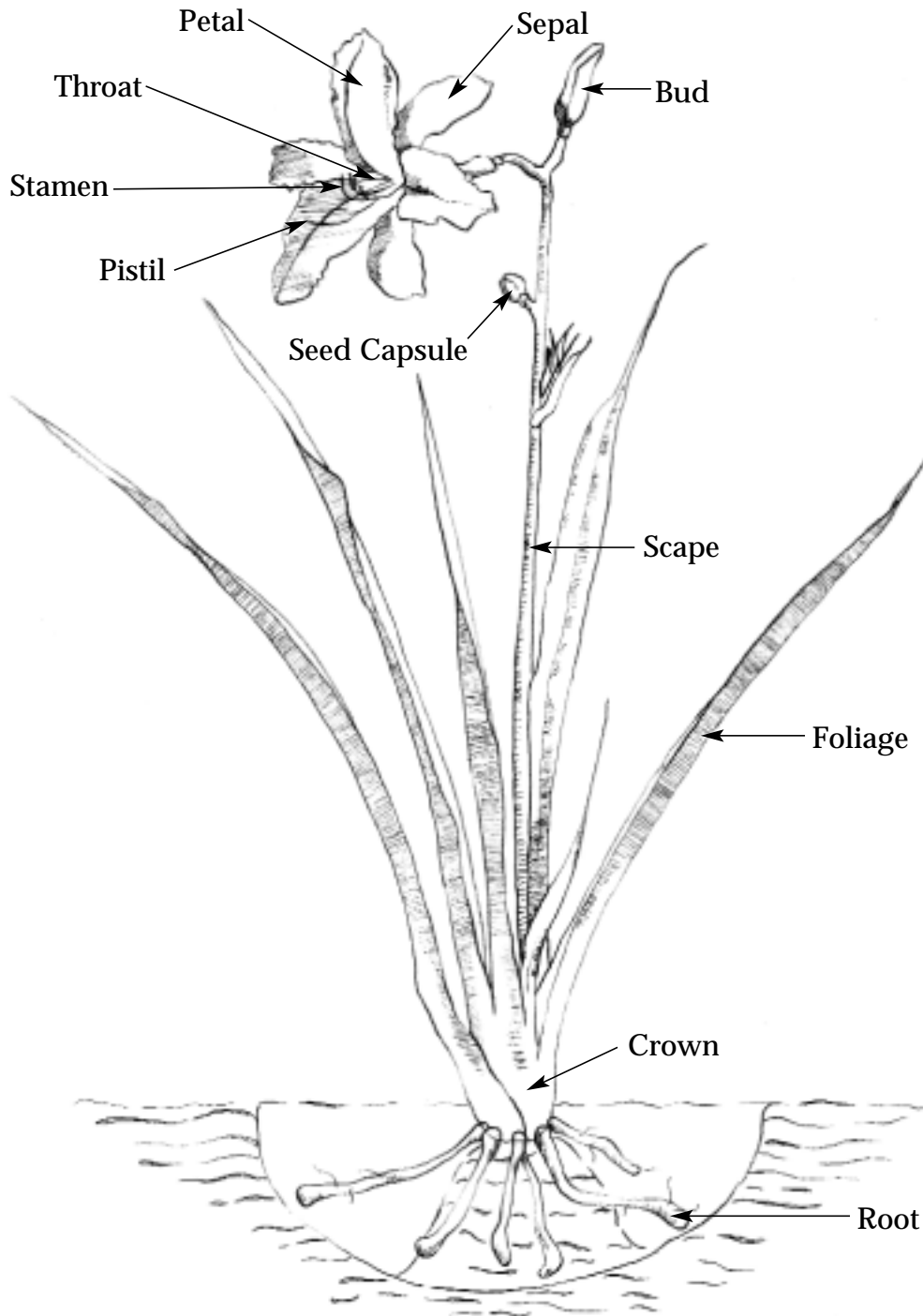


6050 Riverview Road • Peninsula, Ohio
330-657-2834 • www.heritagefarms.com

© 2003 Heritage Farms, Illustration: Anna-Dawn Maynard

• THE PERFECT PERENNIAL •

Parts of a Daylily Plant



6050 Riverview Road • Peninsula, Ohio
330-657-2834 • www.heritagefarms.com

© 2003 Heritage Farms, Illustration: Anna-Dawn Maynard